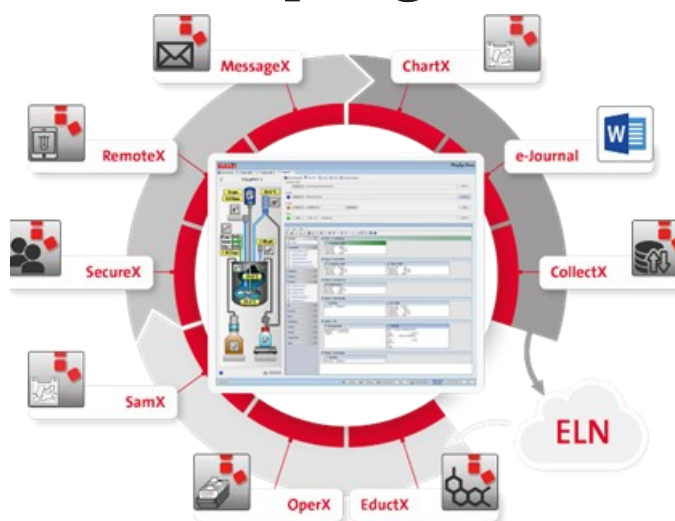


# FlexySys Update Campaign

## Release 3.2



### FlexySys Update

In order to keep pace with the ever-changing technology and rapid development of the IT infrastructure sector, we recommend updating your FlexySys software application to the latest release 3.2.

The FlexySys Software Release 3.2 is based on the latest technologies regarding operating systems and PC infrastructure, and ensures high availability of your SYSTAG automation solution in the future.

These are your advantages if you decide to upgrade now:

- **Ensuring system availability**
- **Windows 7 to Windows 11 compatibility**
- **Updated driver structure for new lab devices**
- **Minimized risk of downtime**

Please contact us at an early stage to arrange a timely appointment. We will be happy to assist you with the efficient planning of your update.

On the following pages you may find an overview of the most important changes and new features of FlexySys Release 3.2.

## Release 3.2

### New features

- The new FlexySys software is fully compatible with Win7-Win11.
- Add-on «EductX» (editable database to manage the substances used) is now integrated into the software as a default function.
- Pictures and photos can now be copied manually to the experiment folder. The camera function of the software will automatically detect those pictures and import them into the report.
- «RemoteX» 30 days trial version.
- Temperature control now possible with gradient control.
- Temperature control now optionally also possible with differential control (deltaT).
- Gravimetric dosage now possible with gradient control (g/min or ml/min).
- By activating/deactivating the balance, the FlexyCUBE will automatically change between gravimetric and volumetric dosage.
- Stirrer torque is now implemented as a safety criterion.
- «CollectX»: Data can now be exported retroactively by the user.

- pH measurement is now possible while dosage is disabled.
- Maximum number of report entries increased from 1'500 to 10'000.
- User specific names for data series will now be exported into CSV files.
- Fixes of various bugs.
- And many more...

### Comes with the next patch:

- Option «SamX»: User interface for the configuration of the active driver and RS interface (stirrer, balance, thermostat, etc.).
- «RemoteX», Start/Hold/Stop of recipes.
- Voice control
- Function «Webcam» can record videos

### General:

This update may require additional training by SYSTAG representative. Depending on the application we estimate in total 1 day on site plus expenses.

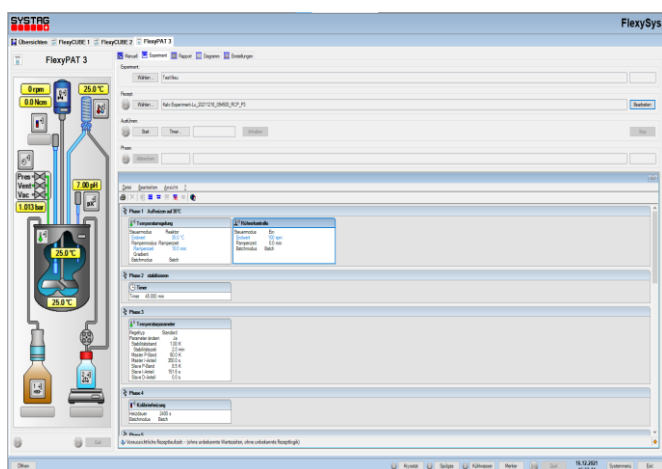


Chart 1: User interface R3.2



Chart 2: RemoteX with FlexyCUBE

## FlexySys Release 3.1

---

### System requirements

#### Hardware Requirements Desktop PC

Type: Dell OptiPlex  
Processor: Intel® Core™ i5-3470 Processor or better  
Memory: min 8 GB  
Hard Disk: SATA with two partitions  
Graphics / Monitor Resolution 1280 x 1024 (for FlexyPlant Systems 1920x1080)  
Video Card with hardware acceleration capability  
LAN: 2 x Ethernet (1 x dedicated for FlexySys control system, 1 x LAN)  
USB: 4 x USB 2.0  
Keyboard: Standard English (USA)  
Mouse: Any Microsoft Windows compatible mouse

#### Hardware Control Unit:

Release 3.1 is compatible with all current SYSTAG control units (Beckhoff, ALR, FlexyPAT, FlexyCUBE,...) except PC-Combilab.

#### Software Requirements:

Operating System: Windows 10 64 bit & Windows 11 64 bit (German or English)  
.NET Framework: Microsoft .NET Framework 4.0 or better  
DirectX Redistributable Version directx\_mar2009\_redist  
Office: Microsoft Office Version 2010, 2013 32bit version only Standard (Word & Excel in German or English)  
Adobe: Acrobat Reader (E) Version 9 or higher

#### Installation Requirements:

For the installation of FlexySys a local administrator account has to be available. After the installation the administrator rights can be revoked, provided access to certain registry keys remain possible. For details please contact SYSTAG support. The FlexySys software uses Microsoft Word macros. Therefore the macros have to be enabled for Microsoft Word.